

POST

Who's responsibility?

May 14, 2021

Mine.

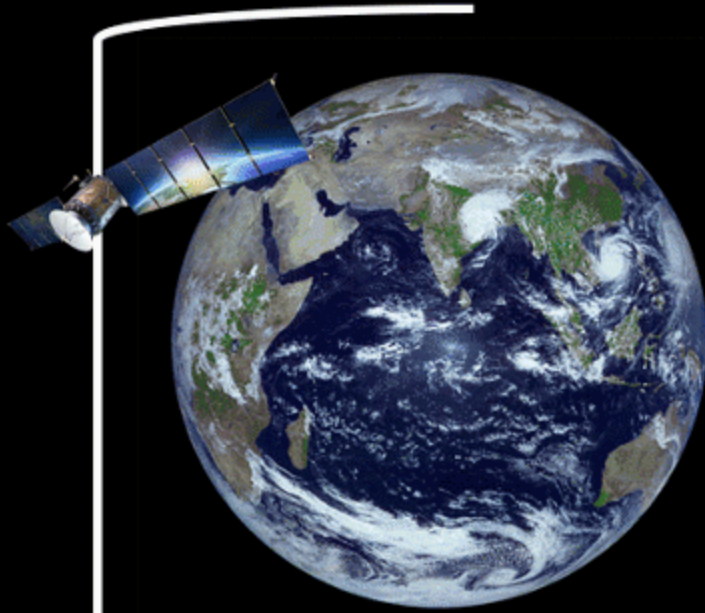
I wrote yesterday on computational environmental protection (http://r20.rs6.net/tn.jsp?f=001Jztw8poV9BgpdwL8unodYooV_hEeuzLL7Gskx9_Xe2l2BiYZVcgbxx4JRFGFdolgv0HRcsvyQCPyGp24U9oZa6JvAuBXIcZ6cPamMMYBo4jxiyE3aO3Miwh7j5sMoia959OoqFeQuoO5THG1swUPjg==&c=&ch=). I want to be clear on who's responsibility I believe it is for building this new computational quantum AI system to save the planet and enhance it's ecological systems.

It's my responsibility. I can build it. And so I must.

---“The greatest threat to our planet is the belief that someone else will save it.”

—Robert Swan

AI



Infinity-Imagined.tumblr.com

EnviroAI



AI and Quantum Computing



Source



---“The problems of the world cannot possibly be solved by skeptics or cynics whose horizons are limited by the obvious realities. We need men who can dream of things that never were.” ~ John F. Kennedy

Our Progress So Far at EnviroAI ...



Layers ▾

Job Maps ▾



TOPO MAPS

- 1995 100%
- 1982
- 1967
- 1961
- 1954
- 1916



Imagery ©2021, Houston-Galveston Area Council, Maxar Technologies, Texas General Land Office, U.S. Geological Survey, USDA Farm Service Agency 200 m

[Terms and Conditions](#)

[Need help?](#)



AI Air

e.g. flares, net heating value, RN101914042

Show Popups

Air Search

Facility Keyword

Bounding Box

Keyword: **exxon baytown**

6519 records

Layers

Map

RN102212925

Documents(50) Permits(60) Emission Events(194)

Deviations(22)

Total events: 154 (since 2004)
Total released: 2713029.95 lbs

Date	Duration	Cause	Total Amount Released
2021-04-16	0 hours, 1 minutes	Failure in UR110 Hydrogen recycle line resulted in	30.56
2011-01-15	0 hours, 21 minutes	A hole in sewer clogging furnace inlet-211 lead	10700
2011-01-16	1 hour, 20 minutes	Failure in Propylene Refrigeration	2540.26
2021-03-09	0 hours, 30 minutes	Safety valve lift due to elevated pressure during	1546.46
2021-02-16	08 hours, 50 minutes	Loss of utilities including but not limited to, there-	190331.01
2021-01-02	24 hours, 0 minutes	Unplanned shutdown of the DOP X recycle	26025.54
2020-11-24	4 hours, 10 minutes	Failure in COP	267.12

Map showing facility layout with various units and tanks labeled, including: SHIPPING TOWER, COOLING TOWER, HYDROGENS, FLARE STACK, and various TANKS.

Terms and Conditions

Need help?

Layers Job Maps Q

onshine Hill Loop

AERIAL MAPS

- 1996 100%
- 2004
- 2009
- 2010
- 2012
- 2014
- 2016
- 2018

Google

Map data ©2021 50 m

Terms and Conditions

Need help?

EnviroAITM

PHASE I



EnviroAI™ Drone App

The screenshot displays the EnviroAI Drone App interface. At the top, there is an orange navigation bar with a 'Layers' dropdown menu, a 'Job Maps' dropdown menu, and a search icon. Below the navigation bar, a map of Houston is shown with several colored overlays and markers. A legend on the left side of the map lists the following layers:

- Phase1-ASTM
- Phase1-VEC
- Historical Topos
- Historical Aerials
- Historical Sanborns
- Oil/Gas
- Adjoining Properties

The map shows various districts including Greater Fifth Ward, Theater District, Downtown Houston, East Downtown, Midtown, and Fourth Ward. A large orange circle highlights a central area, and a green circle highlights a smaller area within it. Numerous green and purple markers are scattered across the map, indicating specific data points or job locations. At the bottom of the screen, there is a 'Terms and Conditions' link on the left and a 'Need help?' link on the right. A small icon of a person wearing a hard hat is visible in the bottom left corner.

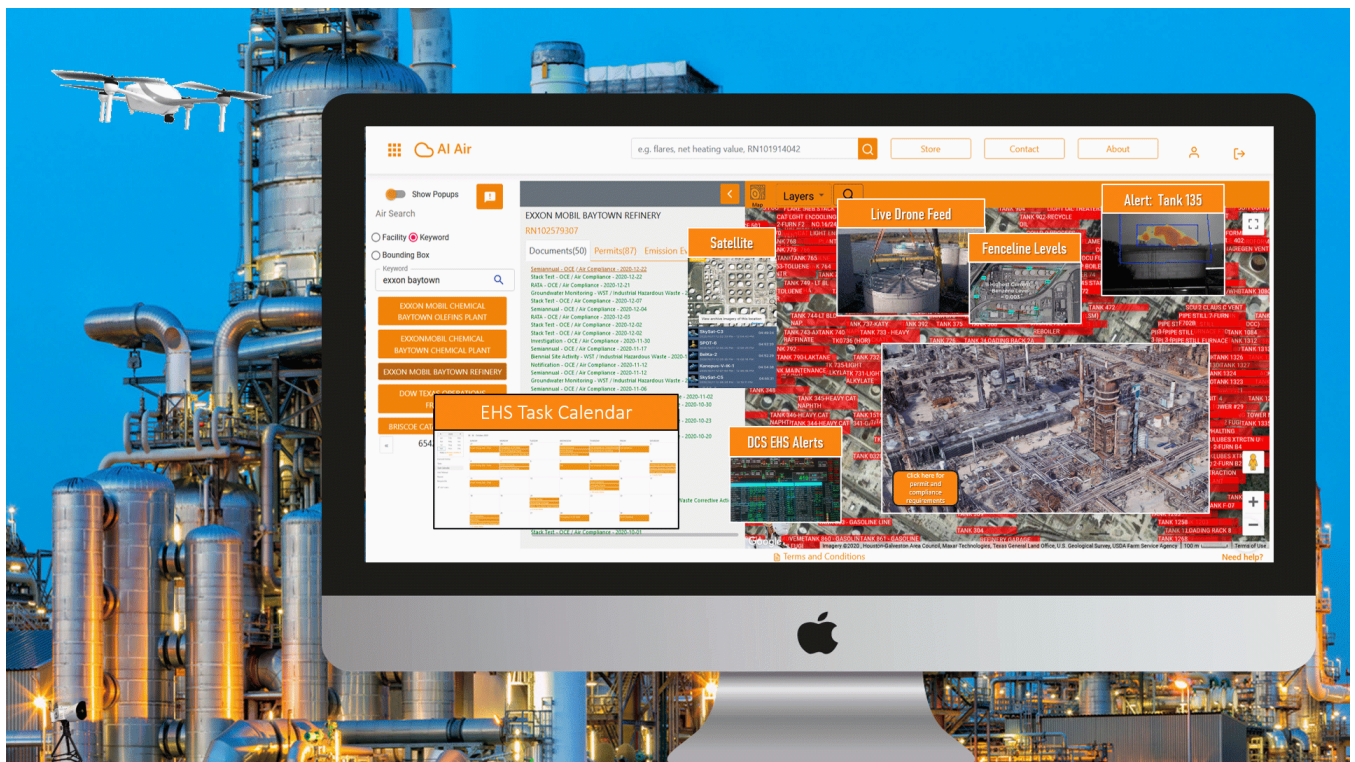
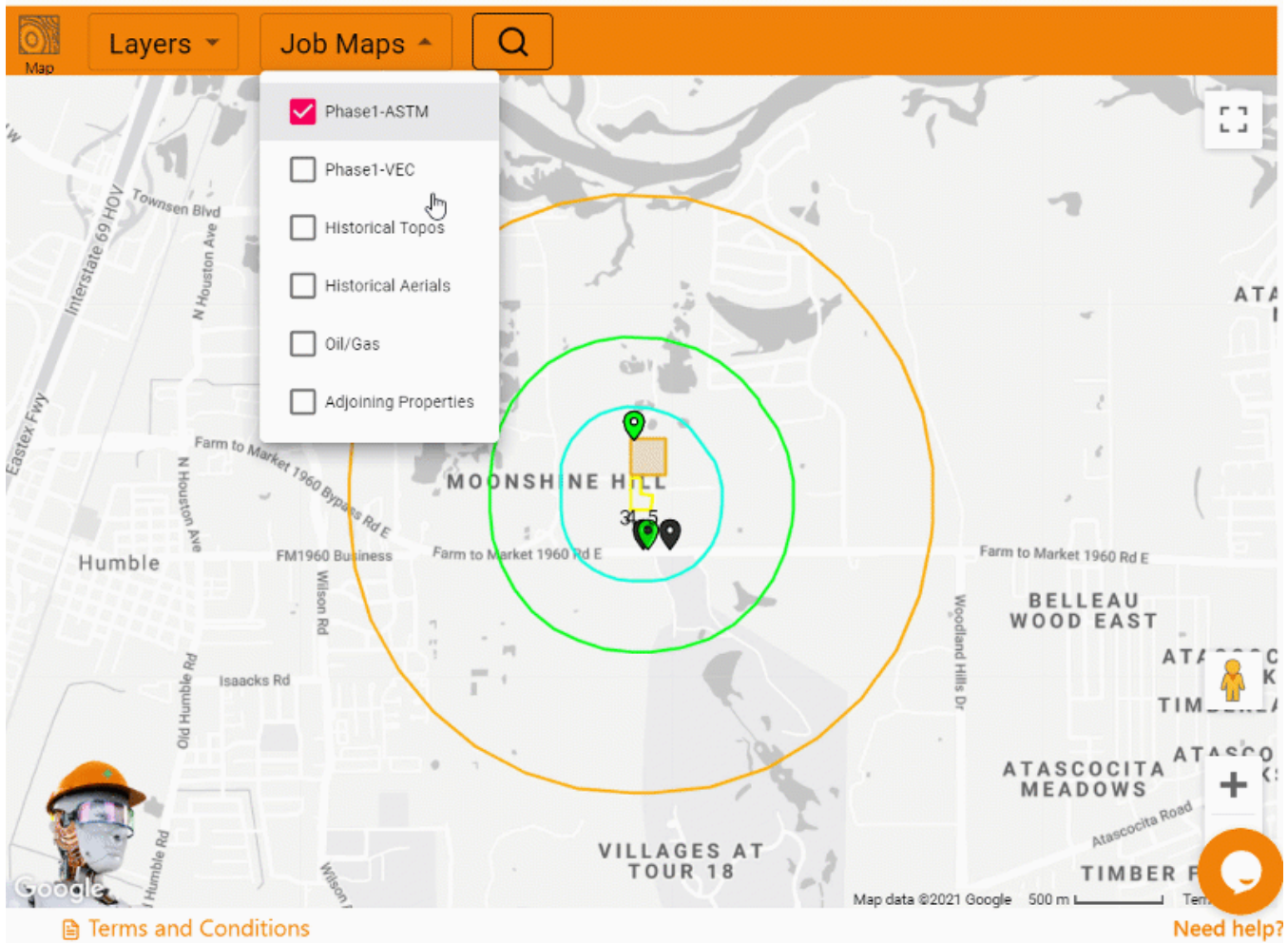
GULF COAST STABILIZER
810 MOONSHINE HILL RD, HUMBLE TX 77338 7313
RN104605563 EPA IDs

Details Documents(6)

- ⊕ APO-AP0000822
- ⊕ APO-AP0001515
- ⊕ STORM-TXR05BC29
- ⊕ STORM-TXR05R627
- ⊕ TX-TCEQ ACR-RN104605563
- ⊕ WQNP-R12108735291

Map interface showing a location in Humble, TX. The map displays concentric circles (orange, green, cyan) around a central point. Labels include RAMBLEWOOD, MOONSHINE HILL, and VILLAGES AT TOUR 18. UI elements include 'Layers', 'Job Maps', 'Need help?', and 'Terms and Conditions'.







Document Query

pipeline fugitives



ENTERPRISE CRUDE HOUSTON STATION

HARLINGEN REFINED PRODUCTS TERMINAL

AIR PRODUCTS LA PORTE PLANT

LUBBOCK PRODUCTS TERMINAL

ALDINE PRODUCTS STATION

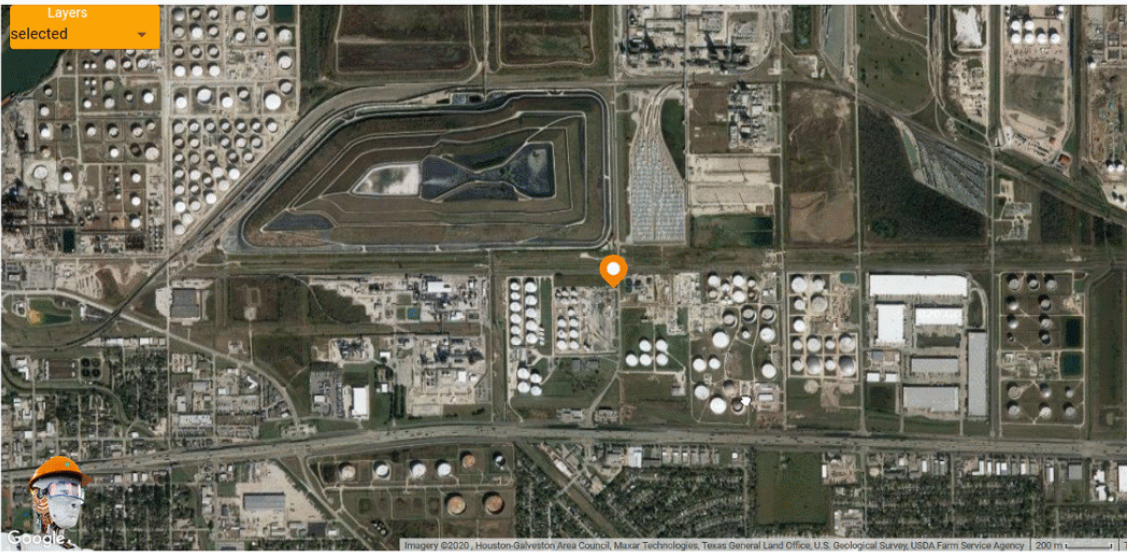
AIR PRODUCTS PASADENA PLANT

SHELL OIL PRODUCTS USA

ENTERPRISE CEDAR BAYOU TERMINAL

Program Query

Spatial Query



EnviroAI

“Building toward a
quantum AI
environmental
protection system
... one
commercialized
application at a
time.”

- Jed Anderson, Creator, [EnviroAI](#)



Contact Us

Licensed [CC-BY-4.0](https://creativecommons.org/licenses/by/4.0/) (https://creativecommons.org/licenses/by/4.0/).

Original source: Constant Contact campaign

Markdown source: <https://jedanderson.org/posts/whos-responsibility.md> (https://jedanderson.org/posts/whos-responsibility.md)

Source on GitHub: [/src/content/posts/whos-responsibility.md](https://github.com/jedanderson432/jedanderson-site/blob/main/src/content/posts/whos-responsibility.md) (https://github.com/jedanderson432/jedanderson-site/blob/main/src/content/posts/whos-responsibility.md)