

POST

# Seeing Emissions

June 3, 2020

Can we?

Environmental intelligence. Enviro AI.



See Emissions

Can Enviro AI?

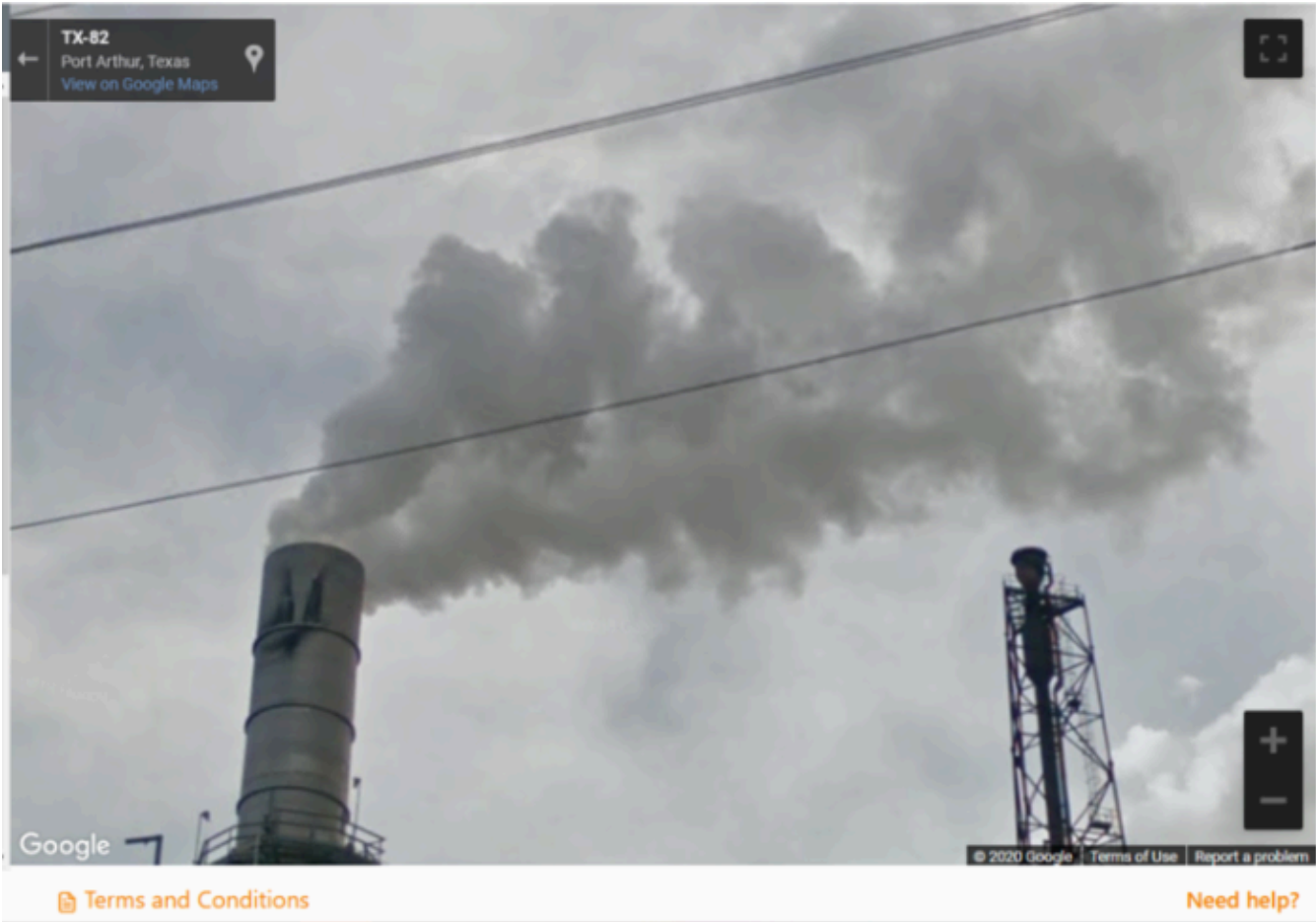
Seeing/Understanding Emissions: EnviroAI is layering and bringing together visual, numerical, textual, and regulatory environmental data with the help of artificial intelligence.

---“When we can see emissions ... we can better control emissions ... and at less cost.  
Simpler.”

—Jed Anderson, Creator, Enviro AI

Current Enviro AI Capabilities

Here's satellite and camera images currently available on EnviroAI:





ATM & VAC UNIT FUG.  
EMIS.

**STACK TWR HEATER**

PREMCOB REFINING GROUP INC E-02-148

STACK

ID#	Name	Group	Profile	MW	VOC	CO	SO <sub>2</sub>
E-02-148	STACK TWR HEATER	CONVERTER	HEATER	2140	0.00	0.00	0.00

Control:  
NOx Control Efficiency : 0.060  
VOC Control % :

## Add-on Capabilities

Additional remote sensing capabilities can be layered into EnviroAI for a particular site(s) or use-case(s) over a secured network (Request a Quote).

- Near real-time satellite imagery and higher clarity resolution (Request a quote)

- Drone imagery and multi-sensor outputs ([Request a quote](#))
- Other remote sensing and image capabilities from various platforms (see examples below)([Request a quote](#))

## Thermal Remote Sensing



## Infra-Red Thermal Imaging

Document 63010 records Layers

Program Spatial

Entity Name	Address
BRICK & MORTAR WORKMA...	3620 RANCH VIEW CT, KERR...
CENTER POINT NO 45	227 S TO JUNO HWY 8 M W, ...
PARKLAND DEVELOPMENT ...	
UPS LEON VALLEY	7129 ECKHERT RD, SAN ANT...
FT HOOD	217,000 ACRE FACILITY, BELL ...
LUX QUARRY	
ROBBINS POINTE	MARBACH ROAD .01 MILES E...
GEORGETOWN WEST CLINIC	0.2 MI SE OF KAUFFMAN LOO...
NORTHGATE RANCH	EAST SIDE OF CR 214, 0.2 MIL...
WOODS UNITS 1 THRU 3 PUD	E SIDE OF IH 10 W 0.26 MI S ...
KELLYWOOD ESTATES SUBDL...	18400 W REED PARKS RD, JO...
OFFICEWAREHOUSE AND RV ...	ON FM 482 0.33 MILES WEST ...
JOHN H 95 1 BATTERY	FROM THE INTERSECTION OF...

FLIR

Terms and Conditions Need help?

Open-Path FTIR/DIAL/SOF (ex. Valero's Open-Path FTIR System in California ([http://r20.rs6.net/tn.jsp?f=0019bZxiUUDeMavO8lp4WeQqGptxYxa5qsxs7N7IyJxlk5bW4c-hPYpjrTEvAq2XUrispfHzjjuVjNJYag3qZQVv-Ise1rsl4KLX9JmazckxoR7DqgpSZou82MvADXL7klbRINoASsZFaQ4Wo4nIX2xK4XTrfyMhRtulhABt3I7qkM8\\_R95\\_S84-g==&c=&ch=](http://r20.rs6.net/tn.jsp?f=0019bZxiUUDeMavO8lp4WeQqGptxYxa5qsxs7N7IyJxlk5bW4c-hPYpjrTEvAq2XUrispfHzjjuVjNJYag3qZQVv-Ise1rsl4KLX9JmazckxoR7DqgpSZou82MvADXL7klbRINoASsZFaQ4Wo4nIX2xK4XTrfyMhRtulhABt3I7qkM8_R95_S84-g==&c=&ch=))))

Document

Program Spatial

Entity IDs

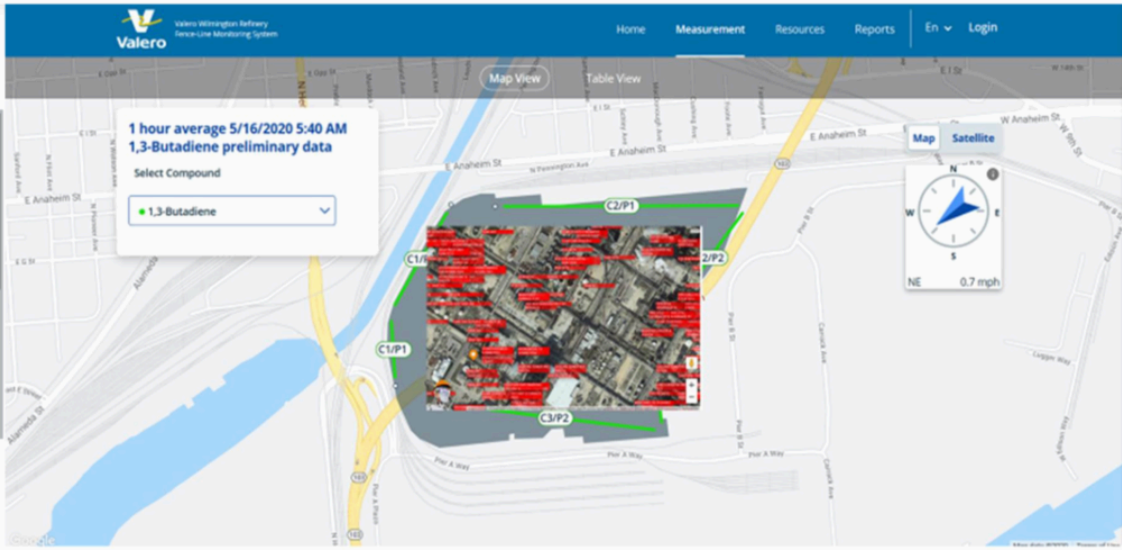
Program IDs

Entity Names

Addresses

Cities

Zips

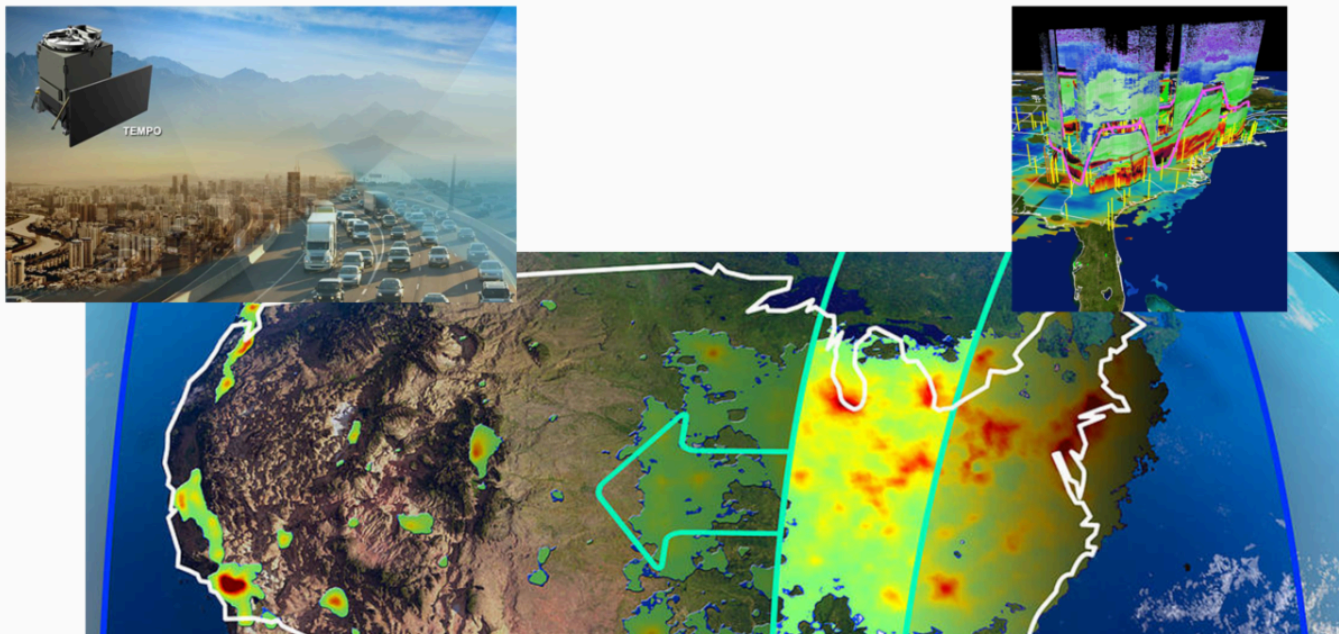


Future Capabilities?

Here is just one of the future remote sensing technologies that EnviroAI is watching and evaluating for future incorporation.

NASA ... SpaceX ... Maxar: TEMPO Satellite Launch in 2022

NASA and SpaceX are scheduled to launch the **TEMPO** satellite ([http://r20.rs6.net/tn.jsp?f=0019bZxiUUDeMavO8lp4WeQqGptxYxa5qsxs7N7IyJxlk5bW4c-hPYpjrTEvAq2XUriXcgJoJtdqBD3H2iiFifXiwfm6eQQ-FEIUC-7ZntJceohXykfu2z\\_uHajA0TySUYIu8BloP78SyU=&c=&ch=](http://r20.rs6.net/tn.jsp?f=0019bZxiUUDeMavO8lp4WeQqGptxYxa5qsxs7N7IyJxlk5bW4c-hPYpjrTEvAq2XUriXcgJoJtdqBD3H2iiFifXiwfm6eQQ-FEIUC-7ZntJceohXykfu2z_uHajA0TySUYIu8BloP78SyU=&c=&ch=)) in 2022. The TEMPO instrument is a UV-visible spectrometer, and will be the first ever space-based instrument to monitor air pollutants hourly across the North American continent during daytime. It will collect high-resolution measurements of ozone, nitrogen dioxide and other pollutants, data which will revolutionize air quality forecasts



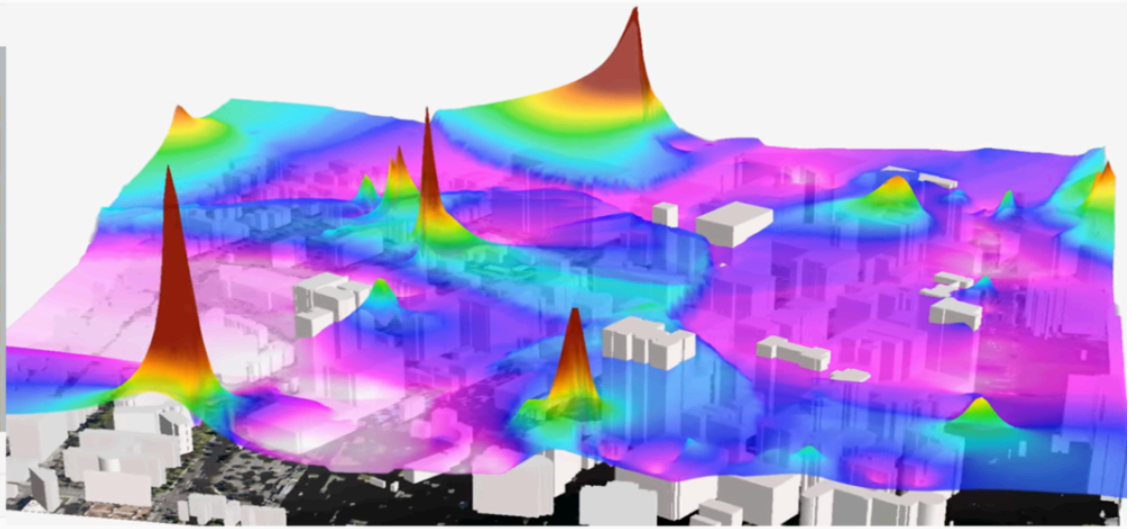
Document Query

"city of houston" 🔍

- ELK OF TEXAS
- BUSH INTERCONTINENTAL AIRPORT-HOUSTON
- ELLINGTON AIRPORT SERVICE COMPLEX
- ALMEDA SIMS WASTEWATER TREATMENT PLANT
- WILLIAM P HOBBY AIRPORT
- WORTHHEY CPF-B
- SOUTHWEST PLANT
- RN101702405

Program Query

Spatial Query



[Terms and Conditions](#)

[Need help?](#)

MORE DATA. MORE POWER.

# Ceres AI™

Environmental A. I.



**More Information on Ceres AI** (<http://r20.rs6.net/tn.jsp?f=0019bZxiUUDeMavO8lp4WeQqGptxYxa5qsxs7N7IyJxlk5bW4c-hPYpjjt9zORL2bc-k58CM5numJL8uPnYyRprEamsd8Cq-db2xgwFEZCRG28eMsdJCERg5BccRTm184JLZgsqbN7Nguf8x-C1Kqaxug==&c=&ch=>)

This is an advertisement for Ceres AI LLC



Original source: Constant Contact campaign

Markdown source: <https://jedanderson.org/posts/seeing-emissions.md> (<https://jedanderson.org/posts/seeing-emissions.md>).

Source on GitHub: [/src/content/posts/seeing-emissions.md](https://github.com/jedanderson432/jedanderson-site/blob/main/src/content/posts/seeing-emissions.md) (<https://github.com/jedanderson432/jedanderson-site/blob/main/src/content/posts/seeing-emissions.md>).