



• JEDANDERSON.ORG • IDEAS FOR ENVIRONMENTAL SUPERINTELLIGENCE

# Nature *Computes*

Nature computes. We compute. Compute together. The point of these ten exercises is to make that visible fast.

Its from bits. Bits protect its.



Each exercise is built to take under ten seconds and create one

immediate perception shift: not "nature is beautiful," but "nature is processing information."

That matters because environmental superintelligence should use bits—measurement, modeling, prediction, coordination—to better protect bonds, biomass, water, forests, and life.

ONE

## Your thumb is running code

`3,200,000,000` base pairs × 2 bits = `800` MB

Storage density: `215` petabytes/gram

*Hold up your thumb.*

Every cell inside it is reading a four-letter code—A, C, G, T—two bits per position, 3.2 billion positions long. Life begins with instructions stored physically.

SEE IT Nature did information storage first.



DNA AS MATTER HOLDING INSTRUCTIONS

TWO

## A leaf is parallel computing

5 inputs → adjust aperture

Replicated × ~1,000,000 per leaf

NATURE'S CODE

*Flip over a leaf.*



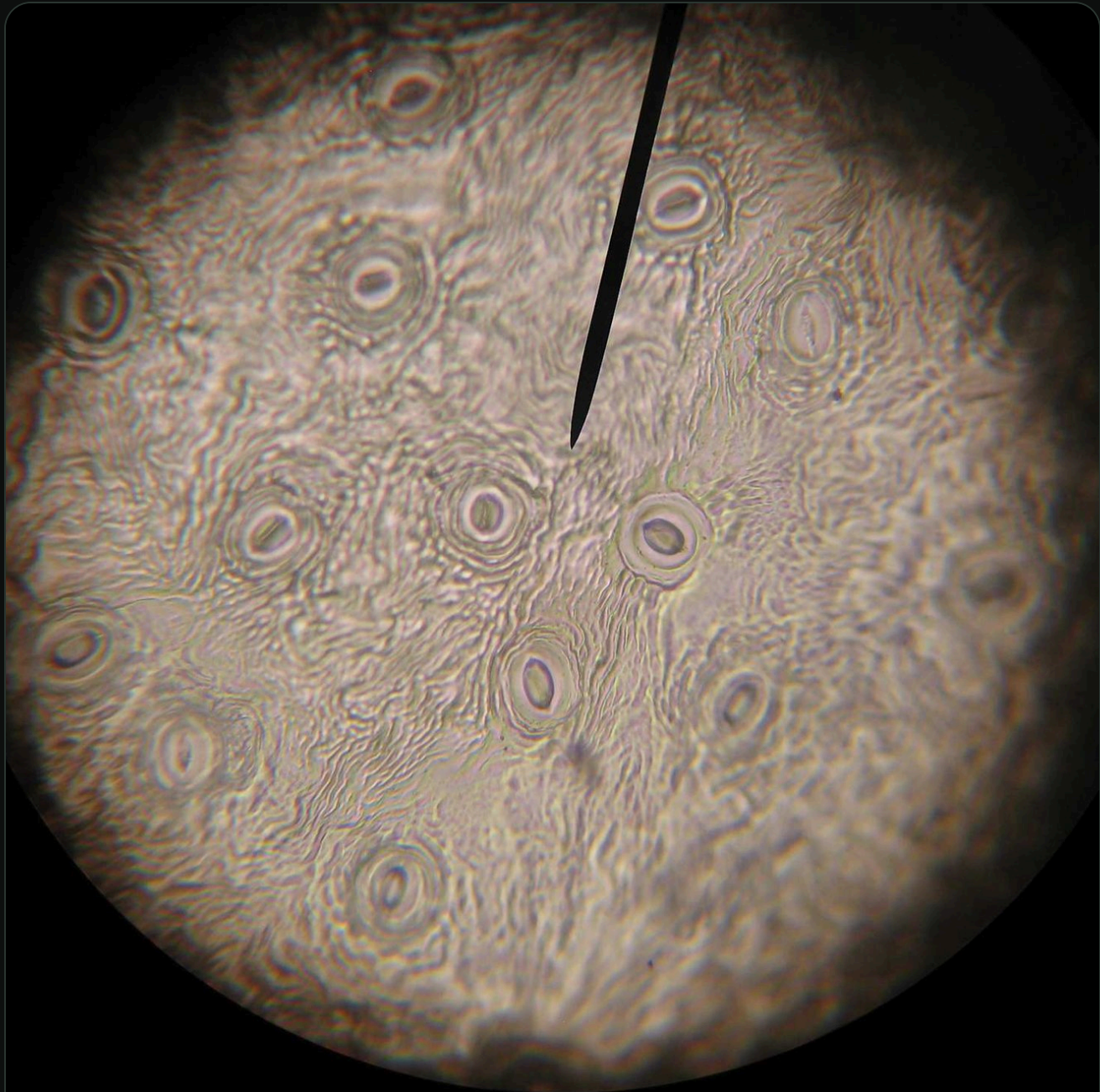
JedAnderson.org

IDEAS FOR ENVIRONMENTAL SUPERINTELLIGENCE

EXERCISE 0 / 10

in parallel.

SEE IT Nature scales computation by distributing it everywhere.



LEAF PORES ACTING LIKE LOCAL CONTROLLERS



THREE

## Soil is voting

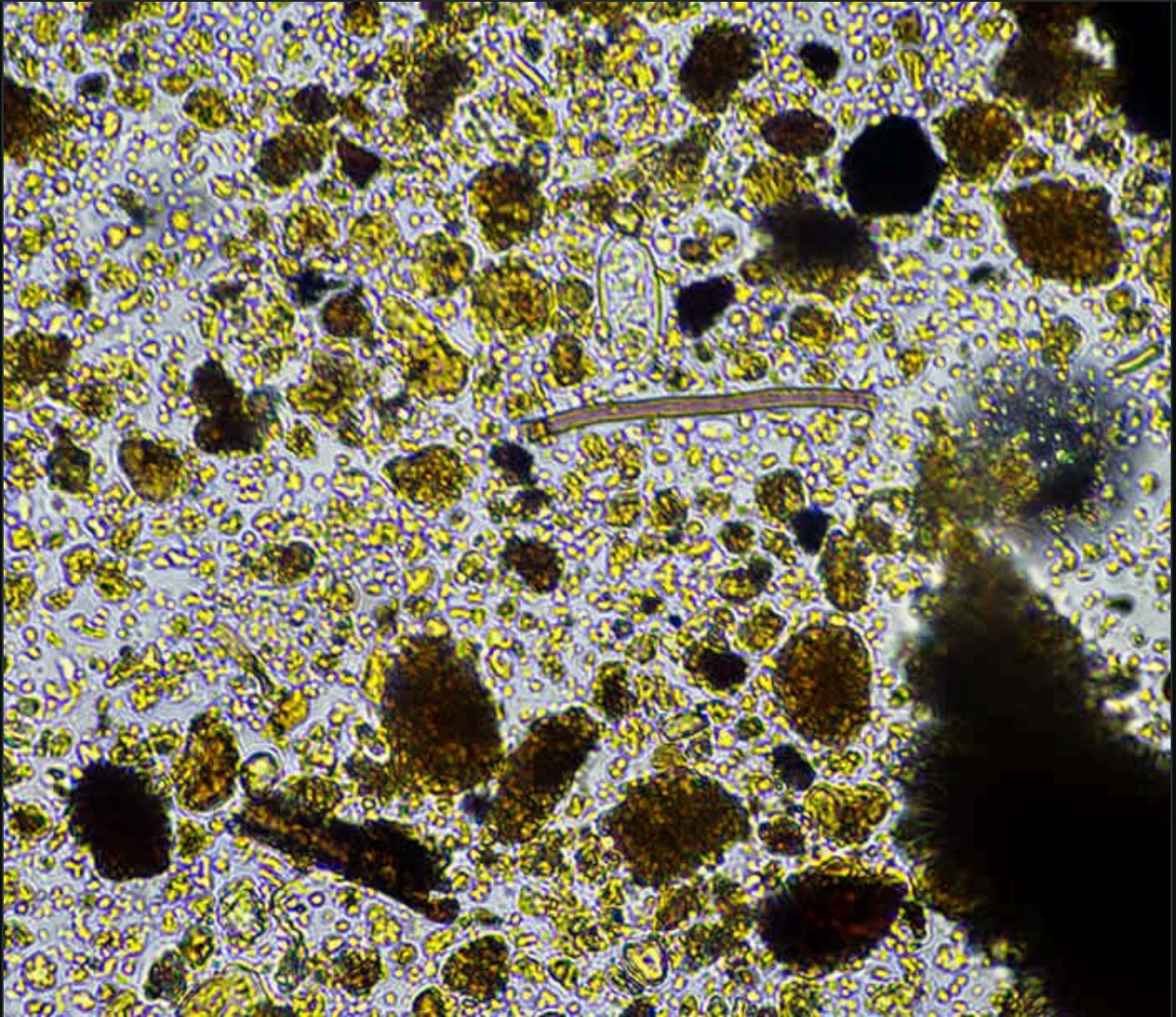
0 below quorum

1 above quorum

*Pick up a little soil.*

Bacteria release signal molecules and switch behavior when enough neighbors are present. That is threshold logic in a population.

SEE IT Nature computes collectively.



MICROBES COORDINATING THROUGH SIGNAL MOLECULES

FOUR

## A tree stores climate data

- 1 good year
- 0 hard year

NATURE'S CODE

Look at tree rings.



JedAnderson.org

IDEAS FOR ENVIRONMENTAL SUPERINTELLIGENCE

EXERCISE 0 / 10

Each ring is a physical record of conditions that year—rain, temperature, drought, chemistry. A tree writes history into wood.

SEE IT Nature senses, stores, and preserves information in structure.



WOOD AS ENVIRONMENTAL MEMORY



FIVE

## A seed is a decision tree

```
IF light + moisture + temperature are right
1 → germinate
0 → wait
```

### *Hold a seed.*

It integrates environmental signals and makes a one-time go/no-go choice. Germinate too early and it dies.

SEE IT Computation does not require a brain.



STORED LOGIC WAITING FOR THE RIGHT SIGNAL

SIX

## A flock is live code

Rule 1 separate

Rule 2 align

NATURE'S CODE



A few local rules create a global pattern with no central controller. Intelligence can emerge from simple coordination.

**SEE IT** Nature shows how distributed systems think together.



SEVEN

## Your immune system is searching

`bind → amplify``miss → discard`

*Think about the last infection you beat.*

Your immune system generates candidate solutions, tests them, keeps what works, and remembers it. That is search, selection, and memory in living tissue.

**SEE IT** Nature solves problems by exploring possibilities and storing winners.



BIOLOGICAL SEARCH, FILTERING, AND MEMORY

EIGHT

## A spider web computes through structure

- 1 structure
- 1 sensing

NATURE'S CODE



It is a trap, a vibration sensor, and a communication network at the same time.  
The intelligence is built into the structure.

**SEE IT** Good environmental intelligence should be embedded in the system itself.



NINE

## The forest is networked.

Tree A → fungal link → Tree B

*Stand near several trees.*

Fungal networks connect roots and move signals and resources across the forest floor. A forest is a connected system, not just a collection.

**SEE IT** Environmental superintelligence should read ecosystems as networks.



ROOTS AND FUNGI AS A COMMUNICATIONS LAYER

TEN

## Bits are cheaper than bonds

1 bit erased:  $\sim 2.9 \times 10^{-21}$  J

1 C-C bond:  $\sim 5.7 \times 10^{-19}$  J

NATURE'S CODE

Ratio: ~200 : 1



JedAnderson.org

EXERCISE 0 / 10

IDEAS FOR ENVIRONMENTAL SUPERINTELLIGENCE

*Stand still for ten seconds.*

Information is much cheaper than forcing matter directly. That is the bridge: use bits—sensing, modeling, prediction, coordination—to protect the physical world.

LANDAUER LIMIT

$\sim 2.9 \times 10^{-21}$  J per bit

C-C BOND ENERGY

$\sim 5.7 \times 10^{-19}$  J

IMPLICATION

Bits protect its

SEE IT Nature computes. We compute. Compute together.



INFORMATION HAS A MEASURABLE PHYSICAL COST



# *Nature computes. We compute. Compute together.*

These exercises are designed to work on a walk, at a site, in a meeting, or in a classroom. The point is immediate perception.

Nature is sensing, storing, signaling, deciding, and coordinating. That is why environmental superintelligence is possible.

[JedAnderson.org](https://jedanderson.org) · [Bits protect its.](#)