

POST

How close?

April 20, 2022

AI protecting the environment

---“Because the people who are crazy enough to think they can change the world, are the ones who do.”

- Rob Siltanen



PROTECTING YOU.

PROTECTING NATURE.

How close is EnviroAI to completing its system automating environmental protection?

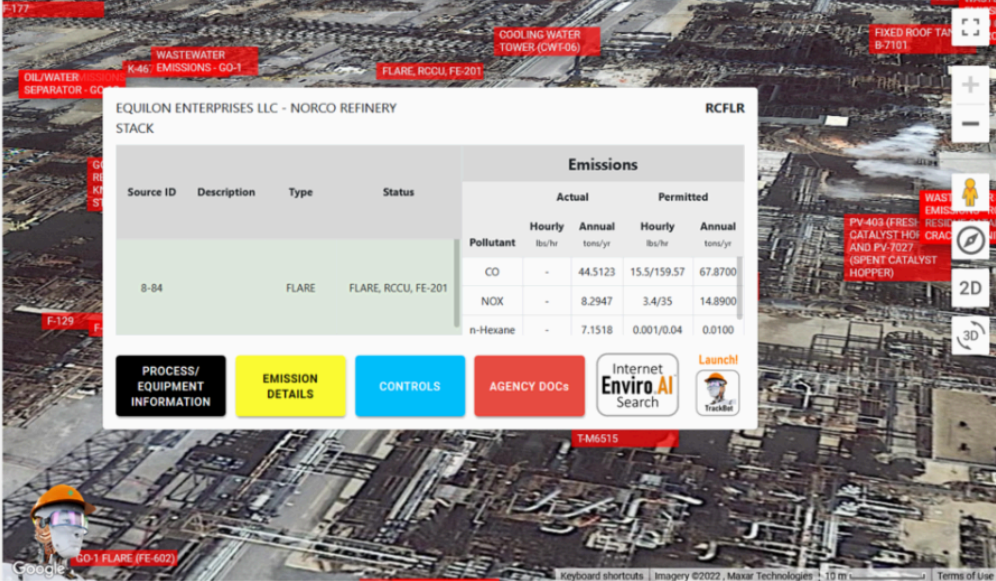
We are approximately 1% complete at this point.

Only 99% to go.

SHELL OIL CO/NORCO MANUF COMPLEX/EAST SITE

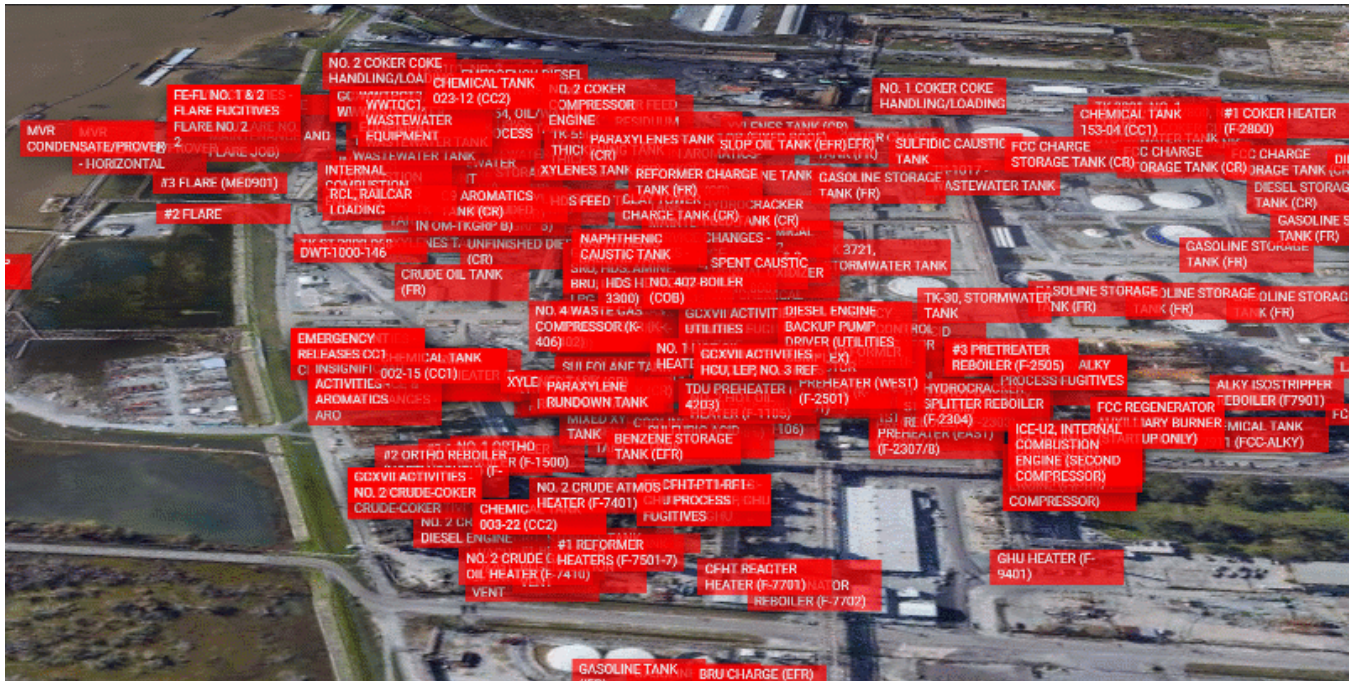
Documents(50) Permits(13)

- Permit Support Services - Air Quality - 2021-08-30
- Enforcement - Air Quality - 2021-08-26
- Enforcement - Air Quality - 2021-08-24
- Enforcement - Air Quality - 2021-08-10
- Permits - Hazardous Waste - 2021-08-03
- Enforcement - Air Quality - 2021-07-29
- Enforcement - Air Quality - 2021-07-29
- Enforcement - Air Quality - 2021-07-29
- Enforcement - Air Quality - 2021-07-27
- Permit Support Services - Hazardous Waste - 2021-07-27
- Incidents - Non-Emergency - Air Quality - 2021-06-14
- Incidents - Non-Emergency - Air Quality - 2021-06-09
- Remediation Services - Hazardous Waste - 2021-05-26
- Remediation Services - Hazardous Waste - 2021-05-25
- Incidents - Non-Emergency - Air Quality - 2021-05-05
- Permit Support Services - Asbestos - 2021-05-03
- Remediation Services - Hazardous Waste - 2021-04-28
- Remediation Services - Hazardous Waste - 2021-04-27
- Permits - Solid Waste - 2021-04-15
- Permits - Solid Waste - 2021-04-09
- Incidents - Non-Emergency - Air Quality - 2021-04-07
- Permits - Air Quality - 2021-03-04
- Enforcement - Air Quality - 2021-02-25
- Incidents - Non-Emergency - Air Quality - 2021-02-23
- Enforcement - Air Quality - 2021-02-23
- Permits - Air Quality - 2021-02-11
- Permits - Solid Waste - 2021-02-08
- Enforcement - Air Quality - 2021-01-28
- Enforcement - Air Quality - 2021-01-28
- Incidents - Emergency - Air Quality - 2021-01-28
- Permits - Air Quality - 2021-01-20
- Incidents - Non-Emergency - Air Quality - 2020-12-26
- Enforcement - Air Quality - 2020-12-10
- Permit Support Services - Asbestos - 2020-12-04



[Terms and Conditions](#)

[Need help?](#)



AI Air e.g. flares, net heating value, RN101914042 Store Contact About

SHELL OIL CO/NORCO MANUF COMPLEX/EAST SITE

Documents(50) Permits(13)

Permit Support Services - Air Quality - 2021-08-30
 Enforcement - Air Quality - 2021-08-26
 Enforcement - Air Quality - 2021-08-24
 Enforcement - Air Quality - 2021-08-10
 Permits - Hazardous Waste - 2021-08-03
 Enforcement - Air Quality - 2021-07-29
 Enforcement - Air Quality - 2021-07-29
 Enforcement - Air Quality - 2021-07-29
 Enforcement - Air Quality - 2021-07-27
 Permit Support Services - Hazardous Waste - 2021-07-27
 Incidents - Non-Emergency - Air Quality - 2021-06-14
 Incidents - Non-Emergency - Air Quality - 2021-06-09
 Remediation Services - Hazardous Waste - 2021-05-26
 Remediation Services - Hazardous Waste - 2021-05-25
 Incidents - Non-Emergency - Air Quality - 2021-05-05
 Permit Support Services - Asbestos - 2021-05-03
 Remediation Services - Hazardous Waste - 2021-04-28
 Remediation Services - Hazardous Waste - 2021-04-27
 Permits - Solid Waste - 2021-04-15
 Permits - Solid Waste - 2021-04-09
 Incidents - Non-Emergency - Air Quality - 2021-04-07
 Permits - Air Quality - 2021-03-04
 Enforcement - Air Quality - 2021-02-25
 Incidents - Non-Emergency - Air Quality - 2021-02-23
 Enforcement - Air Quality - 2021-02-23
 Permits - Air Quality - 2021-02-11
 Permits - Solid Waste - 2021-02-08
 Enforcement - Air Quality - 2021-01-28
 Enforcement - Air Quality - 2021-01-28
 Incidents - Emergency - Air Quality - 2021-01-28
 Permits - Air Quality - 2021-01-20
 Incidents - Non-Emergency - Air Quality - 2020-12-26
 Enforcement - Air Quality - 2020-12-10
 Permit Support Services - Asbestos - 2020-12-04

EMISSION DETAILS

9-84 - undefined

Pollutant	Actual		Permitted	
	Hourly lbs/hr	Annual tons/yr	Hourly lbs/hr	Annual tons/yr
1,3-Butadiene	-	442.3584	0.286/12.3	1.2500
Benzene	-	14.6070	0.002/0.03	0.0100
CO	-	9.9437	22.41/517.39	98.1600
n-Hexane	-	9.6781	0.001/0.001	0.0100
VOC	-	5.6018	10.8/291	47.5000
Toluene	-	5.4511	0/0	-
Methanol	-	1.8083	0.001/0.002	0.0100
NOX	-	1.6096	4.92/113.49	21.5300
Propylene	-	1.3677	0/0	-
Styrene	-	1.2055	0.001/0.002	0.0100

LDEQ Emissions Inventory 2020

Terms and Conditions Need help?

AI Air e.g. flares, net heating value, RN101914042 Store Contact About

SHELL OIL CO/NORCO MANUF COMPLEX/EAST SITE

Documents(50) Permits(13)

Permit Support Services - Air Quality - 2021-08-30
 Enforcement - Air Quality - 2021-08-26
 Enforcement - Air Quality - 2021-08-24
 Enforcement - Air Quality - 2021-08-10
 Permits - Hazardous Waste - 2021-08-03
 Enforcement - Air Quality - 2021-07-29
 Enforcement - Air Quality - 2021-07-29
 Enforcement - Air Quality - 2021-07-29
 Enforcement - Air Quality - 2021-07-27
 Permit Support Services - Hazardous Waste - 2021-07-27
 Incidents - Non-Emergency - Air Quality - 2021-06-14
 Incidents - Non-Emergency - Air Quality - 2021-06-09
 Remediation Services - Hazardous Waste - 2021-05-26
 Remediation Services - Hazardous Waste - 2021-05-25
 Incidents - Non-Emergency - Air Quality - 2021-05-05
 Permit Support Services - Asbestos - 2021-05-03
 Remediation Services - Hazardous Waste - 2021-04-28
 Remediation Services - Hazardous Waste - 2021-04-27
 Permits - Solid Waste - 2021-04-15
 Permits - Solid Waste - 2021-04-09
 Incidents - Non-Emergency - Air Quality - 2021-04-07
 Permits - Air Quality - 2021-03-04
 Enforcement - Air Quality - 2021-02-25
 Incidents - Non-Emergency - Air Quality - 2021-02-23
 Enforcement - Air Quality - 2021-02-23
 Permits - Air Quality - 2021-02-11
 Permits - Solid Waste - 2021-02-08
 Enforcement - Air Quality - 2021-01-28
 Enforcement - Air Quality - 2021-01-28
 Incidents - Emergency - Air Quality - 2021-01-28
 Permits - Air Quality - 2021-01-20
 Incidents - Non-Emergency - Air Quality - 2020-12-26
 Enforcement - Air Quality - 2020-12-10
 Permit Support Services - Asbestos - 2020-12-04

PROCESS/ EQUIPMENT INFORMATION

Emission Point No., LWOGF

STACK

FLARE, WEST OPS GROUND, FG-201

Normal Operating Rate = 101.6 MM BTU/hr
 Max Operating Rate = 8211 MM BTU/hr

Height = 51.8 ft
 Exit Gas Temperature = 1832 F
 Diameter = 6 ft
 Exit Gas Velocity = 65.6 ft/sec
 Exit Gas Flow Rate = 1854.79630268 cfs

LDEQ Emissions Inventory 2020

Terms and Conditions Need help?

Enviro.AI™

Visit our Website (https://r20.rs6.net/tn.jsp?f=001ziIwY5M_XwmSo-dYaaXbpbjgVp41ifpQA7niDs9OmKFkeR7P7TsM8qPgac2gLAarFwMua3cBSK6EtWQFKls3Sz8UFXoiZ3XztpVSgpdv1s3xyaVDLt4Sb714-L2FCR4e4K98LmazcYs=&c=&ch=)

Original source: Constant Contact campaign

Markdown source: <https://jedanderson.org/posts/how-close.md> (<https://jedanderson.org/posts/how-close.md>).

Source on GitHub: [/src/content/posts/how-close.md](https://github.com/jedanderson432/jedanderson-site/blob/main/src/content/posts/how-close.md) (<https://github.com/jedanderson432/jedanderson-site/blob/main/src/content/posts/how-close.md>).