

POST

# Environmental Object Detection?

October 19, 2020

How do we do it?

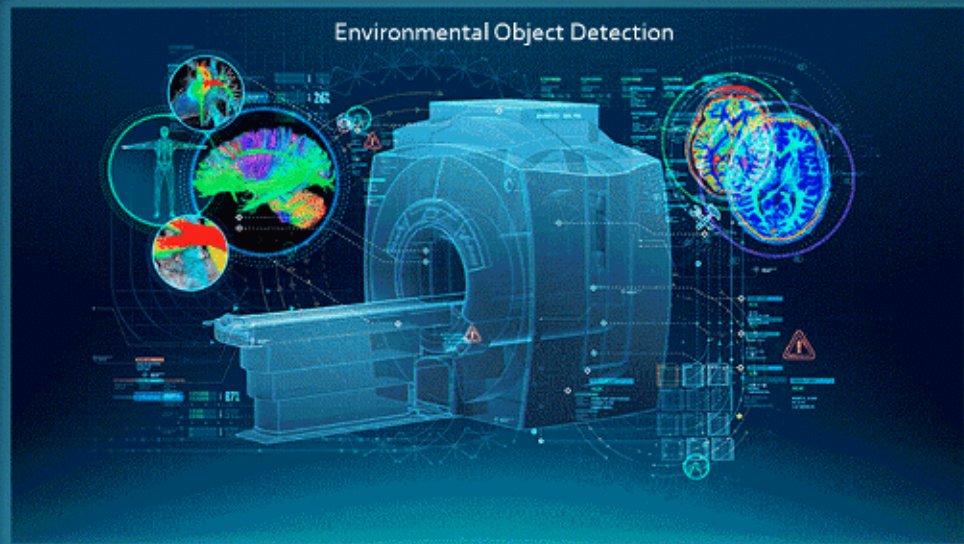




## EnviroAI Vision

"Similar to an MRI machine with AI object detection that can look for anomalies in your body . . . EnviroAI is using satellite, drone, and other imagery with AI object detection to look for anomalies in the environment."

- Lee Anderson, CEO, EnviroAI



# Environmental Object Detection

---“Similar to an MRI machine using AI object detection to look for anomalies in your body ... EnviroAI is using satellite, drone, and other imagery with AI object detection to look for anomalies in the environment.”

– Jed Anderson, Creator, EnviroAI

How does EnviroAI recognize environmental anomalies and objects?

... just like AI is being trained to recognize cancer and other anomalies or objects.  
We use machine learning and a deep learning convolutional neural network to train AI to recognize pollution and other environmental objects (smoke, sheens, nonexistent or improper control equipment, etc.)

**Google** ([vision AI. \*\*Microsoft\*\* \(\[Vision AI \\(Watson\\).\]\(http://r20.rs6.net/tn.jsp?f=001LZzzO5gpfJdQLIwo961udw4ByXGzd8ozhS1SzhLmjXgBiLJmdwJ7A2D87nSmIVtZs8J5aEo3evouagHs\_rYNSnIzQWsb3edHoKt8oeyEhqOBLmoNAdrTT52CnL\_ iyHoo\_2aCxmVYb-PaxBjnEspkrToF9AbBD2BeN6cieOQNeLoJd1eQ-z-3hqLDmUcUS\_\_jkizlfXo4d3X7ZDuObCw-R3Lykq94ScFo&c=&ch=\) <b>Vision AI \(Azure\)</b>. <b>IBM</b> \(<a href=\)](http://r20.rs6.net/tn.jsp?f=001LZzzO5gpfJdQLIwo961udw4ByXGzd8ozhS1SzhLmjXgBiLJmdwJ7A2D87nSmIVtZXXFmXEihi94QoTqqfP1eFcnAwKq5JzBa_yrrAQCE8-5T8XvXg7QC4vOTA47smfodTo5u27BNkFUUUTltgQorWbzlTnmfxDr79KbdhefmhC1cbm7zBTzsVlyxcJ5wwjPKPcYvHjp_99-8iE4xfoXjRpD18y21654auZKeSHEGZy48JhC3lkBCckVoZeT6mCY5_WqYahVO6A2umIwnaYl2ORf73HhfLjC5ZuvDflfow2TcNwXKWRhBbYtCQ46dyE-dxQtQtsd9j_gl8oKvznMsH_2-v9WKzldcM9a1MZr4voQVpmHFoXnMW8RMDIFC4rYY5TRLrz6MSvCwqwxuI9ovHrmouZohS2I7qEEsoM_rhXaODQ27prXdUqU1dCr3X74BbkiNv_534fNleKOCrs_5bWfKR2K73jEboHsbSq1hIlzLfI8Nvjt1tulQAtPUyfZWA5rqDi6nLXVr-Og-5FcuDR6sx_gEWsLzgAliKEw3Hpyzr7ljfZWmpYVHsncWKlVKdp9iBXE3PfmFOqaf-cCTsBoe3J3WAozN1_UnouHdwjsPio9iGqoKv9X_tRWVJw-G1pUVqJj6fox7fbvoIo5SEC12djYYQi9q6igImQeh-I67BQooGbbqf8ek9Di2B28bGFunCiGioGZDqsxHaJdcHnNosC5B93f4AnkRqLqk6tr9RJwg3DtHToK_OpaEjNP379a51gQyQAaRY7x7jKi9HhHyQxXlXLPXDKAhKb5TDkInnyFwfaQHebjGKooqw6K7JWOGJ8zSwbBwjLONQotsdPpAYMfQKAKKaUAeKTV1do=&c=&ch=) <b>vision AI</b>. <b>Amazon</b> (<a href=)

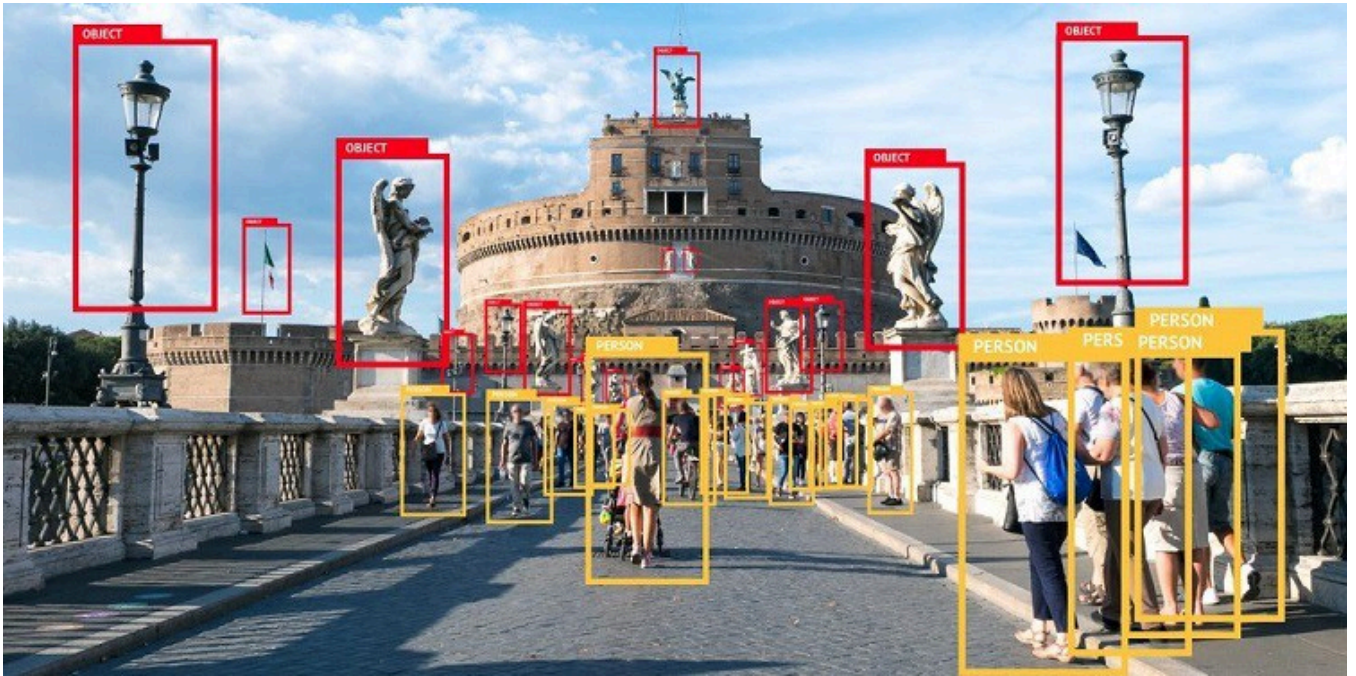
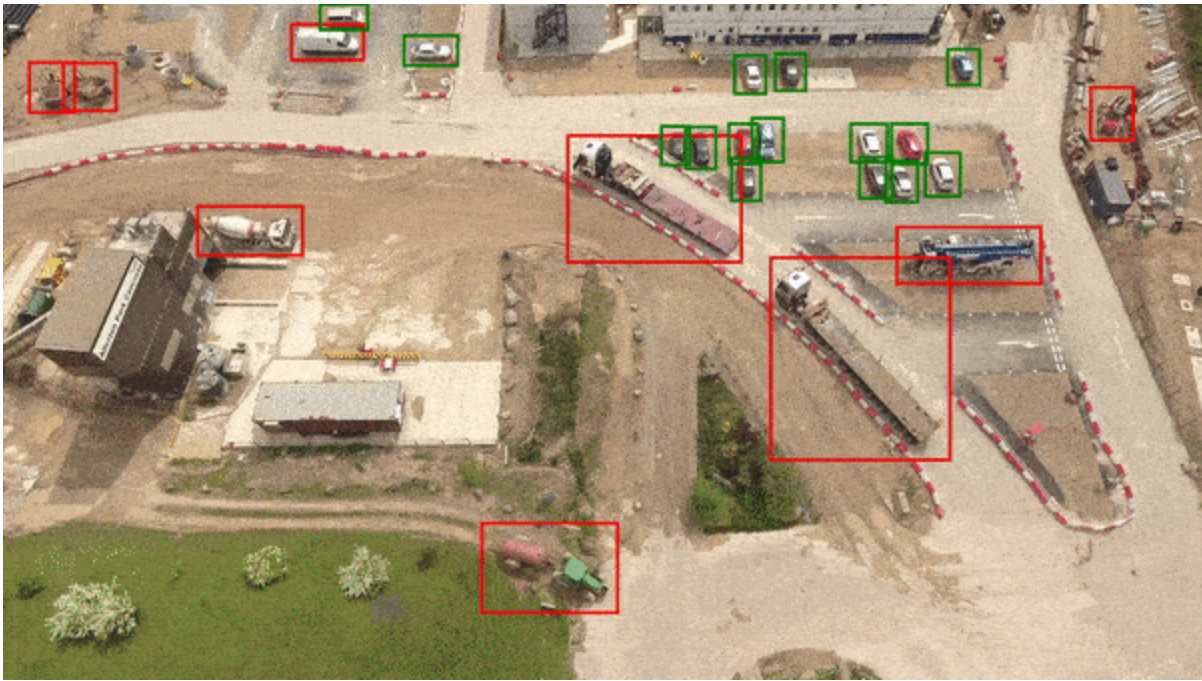
How do we

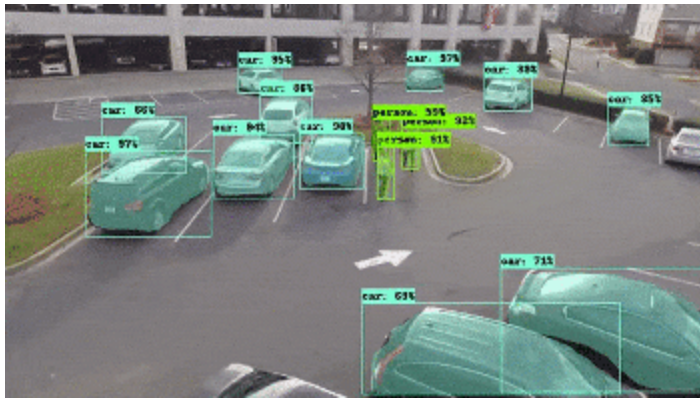
train EnviroAI to recognize objects and anomalies?

(examples)









To begin using EnviroAI environmental anomaly and object detection on drone imagery, satellite imagery, or fixed-camera imagery ... please contact us at [ceres@enviro.ai](mailto:ceres@enviro.ai).



---

Licensed [CC-BY-4.0](https://creativecommons.org/licenses/by/4.0/) (<https://creativecommons.org/licenses/by/4.0/>).

Original source: Constant Contact campaign

Markdown source: <https://jedanderson.org/posts/environmental-object-detection.md> (<https://jedanderson.org/posts/environmental-object-detection.md>).

Source on GitHub: [/src/content/posts/environmental-object-detection.md](https://github.com/jedanderson432/jedanderson-site/blob/main/src/content/posts/environmental-object-detection.md) (<https://github.com/jedanderson432/jedanderson-site/blob/main/src/content/posts/environmental-object-detection.md>).