

POST

Automate Environmental Reviews

June 19, 2020

Audits, Due Diligence, Phase 1s

AUTOMATE ENVIRONMENTAL REVIEWS

Layers selected

Document Query

pipeline fugitives

- ENTERPRISE CRUDE HOUSTON STATION
- HARLINGEN REFINED PRODUCTS TERMINAL
- AIR PRODUCTS LA PORTE PLANT
- LUBBOCK PRODUCTS TERMINAL
- ALDINE PRODUCTS STATION
- AIR PRODUCTS PASADENA PLANT
- SHELL OIL PRODUCTS USA
- ENTERPRISE CEDAR BAYOU TERMINAL

Program Query

Spatial Query

Image ©2020, Houston-Galveston Area Council, Maxar Technologies, Texas General Land Office, U.S. Geological Survey, USDA Farm Service Agency | 200 m

[Terms and Conditions](#)

Ne

EnviroAITM

Environmental Intelligence

Document Query

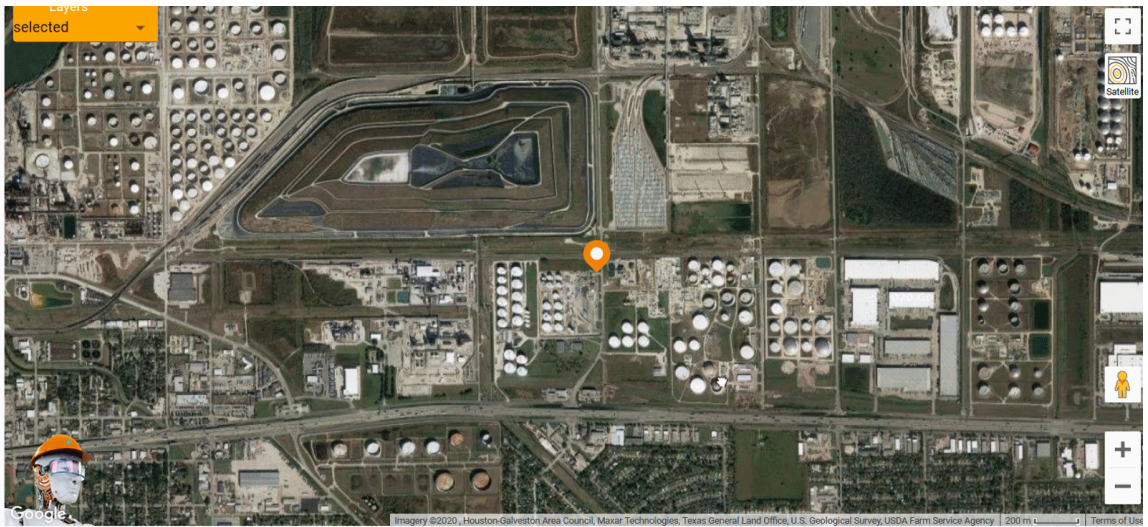
pipeline fugitives



- ENTERPRISE CRUDE HOUSTON STATION
- HARLINGEN REFINED PRODUCTS TERMINAL
- AIR PRODUCTS LA PORTE PLANT
- LUBBOCK PRODUCTS TERMINAL
- ALDINE PRODUCTS STATION
- AIR PRODUCTS PASADENA PLANT
- SHELL OIL PRODUCTS USA
- ENTERPRISE CEDAR BAYOU TERMINAL

Program Query

Spatial Query

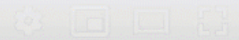


- AUDITS
- DUE DILIGENCE
- PHASE 1S



CERES™ Environmental AI

How can I help you?



ENVIRONMENTALDATA.POWER. SPEED.

More Information (http://r20.rs6.net/tn.jsp?f=00103HtK1sF--xZH30voU-Q0r9jG1tmMP4w8-5TOSg7czxYwVEyUztBRb6tcZR91DjiKWN4QoCL1xSBHF6sw6yMiR4Yi.JsCefqBBD4dsPzIf8QRYq32zGScpv_E3D8eAhXExGVU395MgFE5z3WcfLHC3A==&c=&ch=)

This is an advertisement for Ceres AI LLC



Original source: Constant Contact campaign

Markdown source: <https://jedanderson.org/posts/automate-environmental-reviews.md> (<https://jedanderson.org/posts/automate-environmental-reviews.md>).

Source on GitHub: [/src/content/posts/automate-environmental-reviews.md](https://github.com/jedanderson432/jedanderson-site/blob/main/src/content/posts/automate-environmental-reviews.md) (<https://github.com/jedanderson432/jedanderson-site/blob/main/src/content/posts/automate-environmental-reviews.md>).